

# MLEP TREELINE

Volume 5, Issue 3

www.mlep.org

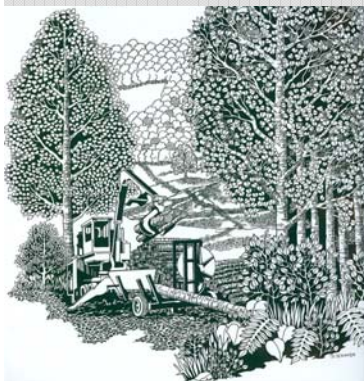
Winter 2007



## Did You Know That....

A cord of wood yields the amount of heat equivalent to what is produced by a ton of coal or 200 gallons of fuel oil.

As a result of careful forest management, the white-tail deer population has grown nationally from 4.5 million to over 16 million in the past 30 years.



## Individual Highlights:

Timber Cruising for Loggers	1
Executive Director's Column	2
Interstate Truckers Info	3
New Websites	3
MLEP eUpdate	3
MMLC Program Update	4
The DOT Audit	5-6
Expanded 2008 Directory	7
Training Notes Available	7

*The Newsletter of the Minnesota Logger Education Program*

## Timber Cruising For Loggers

*"This was the best course I have attended since MLEP started"*

With funding from the Blandin Foundation, MLEP worked with the University of Minnesota to design and deliver a workshop on timber cruising for loggers. This full day classroom and field workshop familiarized participants with the various tools and techniques used to assess standing timber. The workshop was designed primarily for loggers and natural resource professionals with little to no experience in timber cruising and forest measurements.

During the workshop, participants learned how to accurately and efficiently cruise standing timber and calculate useful stand level information. Participants also learned how to calculate timber stand value from cruising data. In order to prepare participants to construct and implement their own timber cruises, the following tools and skills were addressed in the workshop: finding and using aerial photos, plat books, compasses, prisms, and Biltmore sticks. In addition, participants were provided with and taught how to use a dot grid, a forest management map template, a Cruz-All angle gauge, and an Excel worksheet, on CD, to calculate timber stand volume and value estimates.

*(Timber Cruising Continued On Page 2)*



Photo: Workshop participants calculate tree height and diameter during a timber cruising exercise.

## Ready to Haul?

You can find a well organized listing of state and national information on load restrictions, permits and regulations by visiting the University of Minnesota Center for Transportation Studies LTAP (Local Technical Assistance Program) website at <http://www.mnltap.umn.edu/About/Programs/TruckWeight/KeyResources.html>

This link is also located on the MLEP website under "Useful Links & Resources".



## Executive Director's Column – David Chura

In my opinion, this is a great time of the year. There isn't much that beats the sound of wood crackling in the fireplace, a wild game dinner and the anticipation of snow. Although, I admit that I can get sick of the snow and bitter wind chill quickly enough.

Four seasons - it is one of the things that make Minnesota great. My brother and his family live just outside of San Francisco. They don't have four seasons, snow or wild game dinners. Soon, they might not even be able to enjoy the sound of wood crackling in the fireplace on a still winter evening. Bay Area air regulators are considering a rule that would make it illegal to use a residential wood fireplace on certain nights. It goes even further, establishing criteria for the sale or transfer of wood burning devices. Well, I guess that means licensed California firearms dealers might also be processing fireplace transactions in the future.

Those favoring the ban argue that fireplaces are the single greatest contributor to particulate matter in the Bay Area. What about wildfires? I wonder how much less particulate matter there would be in California if the forests were managed in a way that minimized the risk of disease and fire, protected the environment and provided jobs and recreational opportunities. Far less than banning the use of the family fireplace I bet.

I hope you have a safe holiday season and a productive New Year. I will be spending the holiday season with friends and family and keeping the fireplace at a steady roar – while it's still legal.



## Timber Cruising For Loggers

*(Continued From Page 1)*

**Learning objectives:** After completing this workshop, participants:

1. Were familiar with common terminology and concepts related to timber cruising
2. Had experience with basic airphoto interpretation
3. Knew how to use a dot grid to calculate stand area and volume
4. Knew the length of their pace, and how to calculate it
5. Knew how to use a compass to navigate between cruise plots
6. Were able to measure tree diameter and height
7. Knew how to estimate stand-level information, such as timber volume and value, from plot data.

### Evaluation

Comments during the workshop and on the evaluations indicated that most of the participant's felt the workshop exceeded their expectations. One participant commented that "this was the best course I have attended since MLEP started." This workshop will be offered again in 2008.

### Workshop Materials

Copies of the workshop materials including agenda, exercises, spreadsheet and handouts can be accessed on our website at: <http://www.mlep.org/trainingmaterials.htm>

### Instructors

Grant Domke, Research Fellow – U of M Dept. of Forest Resources  
Angela Gupta, Extension Educator – U of M Extension



BLANDIN FOUNDATION



## New Fee and Required Registration for All Interstate Truckers



It is mandatory for all carriers operating in interstate and foreign commerce to register with a registration state before 11/15/2007.

The Single State Registration System (SSRS) and Minnesota Interstate Exempt Commodity Bingo Stamp (commonly known as a D-1 Bingo Stamp) was terminated by section 4305A of Uniform Carrier Registration Act of 2005 as of January 1, 2007.

As replacement for this program, the Uniform Carrier Registration (UCR) program was announced in Minnesota on October 5, 2007. To learn more, visit the MLEP website at <http://www.mlep.org/Documents/UniformCarrierReg.pdf>

## Improved MLEP and MMLC Websites

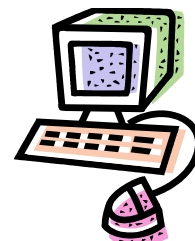
Chris DeRosier from our office has finished redesigning and expanding both the Minnesota Logger Education Program and Minnesota Master Logger Certification websites. The new websites continue to provide information on workshops, online registration, and the membership directory, but also includes news and updates, program and training documents, expanded resources, and a directory of Minnesota Certified Master Loggers.

Both websites can be accessed from [www.mlep.org](http://www.mlep.org). If you have any ideas or feedback, we always welcome both!



## MLEP eUpdate

Have you been receiving the MLEP eUpdate? If not, we encourage you to sign up for it today at [www.mlep.org](http://www.mlep.org). The eUpdate is free, published monthly and alerts you timely news, training opportunities and resources.







## Minnesota Master Logger Certification Program Update

MMLC auditors are wrapping up the field audits for 7 new MMLC applicants. The auditors are conducting a total of 21 field audits. The business management practice audits are also being finalized. The complete applications are scheduled to be presented to the MMLC Certifying Board for action in January 2008. The MLEP Board of Directors has stated that they would like to see the total number of Minnesota Certified Master Loggers grow from 43 to 65 by the end of 2008.

### Focus Groups with Minnesota Certified Master Loggers and Stakeholders

The future success of the MMLC program will be determined by the market. Ensuring that the MMLC program provides value to participants is a key way to ensure continued participation. In the next three months, we hope to hold several focus groups with the current Minnesota Certified Master Loggers and key stakeholders to identify opportunities to add further value as well as to improve the program.

These focus groups (likely locations to include: Duluth, Grand Rapids, Bemidji and Cook) would be 2-3 hours in length and would include an overview of the goal of the focus groups, participant discussion about MMLC including perceptions and general thoughts, opportunities for improvement and ways to add value.

### Calibration Training for MMLC Field Auditors, New Auditors and Certifying Board Members

In March of 2006, the MMLC program conducted field auditor training. Since that time, several questions and discussions with field auditors and the certifying board have ensued regarding appropriate protocols for measuring and interpreting the MMLC standard. It has determined that a refresher protocol and calibration training would be beneficial to both field auditors and the certifying board.

The training would focus on the appropriate protocols for measuring and interpreting the MMLC standard and include both classroom and in-woods instruction.

### Interested in Becoming a Minnesota Certified Master Logger?

Call or visit us online for application materials and to learn more about this exciting new program.



## The DOT Audit – Are You Prepared?

You open the mail and there it is, a letter from a Transportation Program Specialist at the Minnesota Department of Transportation, Office of Freight and Commercial Operations informing you that your businesses has been scheduled for an audit of your records. Are you prepared? Ask yourself the following questions:

**Do you have driver qualification files and are they complete?**

**Do you have a driver qualification file for yourself?**

**Are you a part of a random drug and alcohol testing program?**

**Are you vehicle inspection and maintenance files up-to-date?**

This year, three Skilled Driver Workshops provided truck drivers and owners with a thorough review of the applicable Federal Motor Carrier Safety Regulations and the DOT audit process. Specific topics include: inspection selection; driver qualifications; drug and alcohol use, testing and programs; hours of service; inspection, service and maintenance; hazardous materials and more. Everyone received a copy of the Federal Motor Carrier Safety Regulations and a variety of required forms and worksheets. Case study scenarios were used to help participants understand the law.

### Test your knowledge and understanding of the law

#### **Scenario A:**

A car crashes into the side of a log truck at an intersection. As a result of the crash, the truck driver is treated away from the scene and the car is towed. Law enforcement issues a ticket to the driver of the car.

*Is the truck driver required to complete a drug and alcohol test?*

#### **Scenario B:**

A truck driver loads pulpwood in Two Harbors and travels to Carlton to drop it at the Carlton rail siding where it will be loaded on a railcar and transported to LP's siding mill in Hayward, Wisconsin.

*Does the truck driver need time records or a log book?*

#### **Scenario C:**

A logger loads equipment at his shop in Northome and moves into a site near Cromwell (a distance of more than 100 miles). He unloads the equipment and operates on the sale for 5 days. The first evening he stays at a local hotel.

*Does the truck driver need time records or a log book?*

#### **Scenario D:**

A logger has a bulk fuel tank (more than 119 water gallons) in the back of his pickup. The tank is half full and he uses the truck to travel from Isabella to a dealership in Superior, WI to pick up some parts.

*What laws apply?*

*(The DOT Audit Continued On Page 6)*



## *The DOT Audit – Are You Prepared?*

(Continued From Page 5)

### Case Study Answers

**Scenario A:** Is the truck driver required to complete a drug and alcohol test? **No.**



**Scenario B:** Does the truck driver need time records or a log book? **Yes.** Does this involve interstate or intrastate transportation? **Interstate.** How old does the driver need to be? **21.**

**Scenario C:** Does the truck driver need time records or a log book? **Yes, a logbook.** Does an exemption apply? If so, what exemption applies? **No – did not return to reporting location and transporting equipment.**

**Scenario D:** What laws apply? **All regulations would apply and the bulk fuel tank (more than 119 water gallons) would require placarding. Needs a CDL, D & A testing, \$1,000,000 insurance, accident reporting, DQ files, logbooks, annual inspection, daily inspection, maintenance files, HM driver training, HM registration to transport HM in Minnesota, HM registration from PHMSA (Pipeline and Hazardous Material Safety Administration), shipping papers, placarding, and security plan.**

### Workshop Materials

Copies of the forms, worksheets and additional case studies are available on our website at:

<http://www.mlep.org/trainingmaterials.htm>

### Future Workshops

Additional workshops on this topic are being considered. If you are interested in attending a workshop on this topic, contact MLEP today.

### Instructor

Pam DeGrote, Transportation Program Specialist  
Minnesota Department of Transportation

## Business Management Training



In today's ever changing and global economy, keen business management skills are a must. Through the University of Minnesota, a training program that addresses information systems, tracking production and financial records, risk management and handling human resources is now being offered.

The catch? It is designed for farmers and targeted at farm wives. Like farming, our industry faces many of the same challenges and needs. And like a lot of farm wives, logging wives are often responsible for managing the business - a job that is becoming increasingly complex. MLEP is working to encourage the Small Business Development Centers, the University of Minnesota and others in the state to develop a similar training program for the logging community.

If you have an interest in this type of training, please send Dave Chura an email at [dchura@mllep.org](mailto:dchura@mllep.org), or contact the MLEP office.



## Expanded Online Membership Directory Planned for 2008



Based on requests from landowners, we are planning to expand the online directory listings to include information about your operation type. When you receive your renewal invoice for 2008, you will be asked to indicate what type of operation you are. Logging companies can select as many types as apply. Operation types include: conventional, cut to length, hand felling, chipper, grinder and horse logging.

Providing this information will assist landowners in locating a logger who can provide the services they desire.

## Four MLEP Board Members Reelected

At the MLEP Board of Director's Annual Meeting, the following board members were reelected to four year terms that will expire 12/31/11:

Bill Fleischman, Izaak Walton League  
 Kelly Kimball, Kimball Logging Inc.  
 Tom McCabe, McCabe Forest Products  
 Bruce ZumBahlen, Minnesota Forestry Association

If you are interested in becoming an MLEP Board Member, please contact Dave Chura.

## MLEP Training Notes Available

MLEP's "Training Notes from the Woods and Classroom" include follow-up summaries from our workshops and other important information.

The summaries provide a written record of the various workshops conducted by MLEP, help participants review what they've learned, provide the feedback received from participants regarding each workshop and address timely and important issues. Copies of these documents are available for download from our website or you can obtain hard copies by contacting MLEP.

### Available summaries include:

Timber Sale Design Training  
 Domestic Production Activities Deduction  
 Biomass Harvesting Guidelines  
 Wetland Conservation Act Req./Silvicultural Exemption  
 Understanding Legal Descriptions  
 Silviculture  
 Timber Cruising for Loggers  
 The DOT Audit  
 Uniform Carrier Registration





Suite 510  
Duluth, MN 55802

(218) 722-5442 Phone  
(218) 722-5196 Fax

Dave Chura  
Executive Director  
dchura@mllep.org

Chris DeRosier  
Executive Assistant  
chris.derosier@mllep.org

*Setting the Standard in  
Logging Professionalism*

**We're on the Web!**

*Visit us at:*

**www.mllep.org**

## Upcoming Training Events

### Truck Weight Compliance Workshops

Shoreview - January 22	Marshall - March 11
Alexandria - January 29	St. Cloud - March 27
East Grand Forks - February 5	Bloomington - April 1
Detroit Lakes - February 26	Duluth - April 22
Mankato - March 4	Rochester - April 29

## Plan Ahead – 2008 Logger Conferences

<b><u>April 8 and 9, 2008</u></b> Fortune Bay Resort/Casino Tower, MN	<b><u>April 16 and 17, 2008</u></b> Hampton Inn & Suites Bemidji, MN
---	--

## - 2008 MLEP Board of Directors -

**Don Wagner, President**  
Wagner Forest Products

**Charlie Blinn**  
U of M Extension

**Jim Marshall**  
UPM – Blandin Forestry

**Ron Beckman Jr., Vice President**  
Ron Beckman Timber Harvesting

**Rod Enberg**  
Enberg Logging

**Bob Tomlinson**  
DNR Division of Forestry

**Kit Hasbargen, Secretary**  
Hasbargen Logging, Inc.

**Seth Johnson**  
Johnson Logging, Inc.

**Bruce ZumBahlen**  
MN Forestry Association

**Bill Fleischman, Treasurer**  
Izaak Walton League

**Kelly Kimball**  
Kimball Logging, Inc.

**Chad Bartel**  
B & B Logging, LLP

**Tom McCabe Jr.**  
McCabe Forest Products

Minnesota Logger Education Program  
301 West First Street, Suite 510  
Duluth, MN 55802

NON-PROFIT ORG.  
U.S. POSTAGE  
PAID  
PERMIT NO. 721  
DULUTH, MN